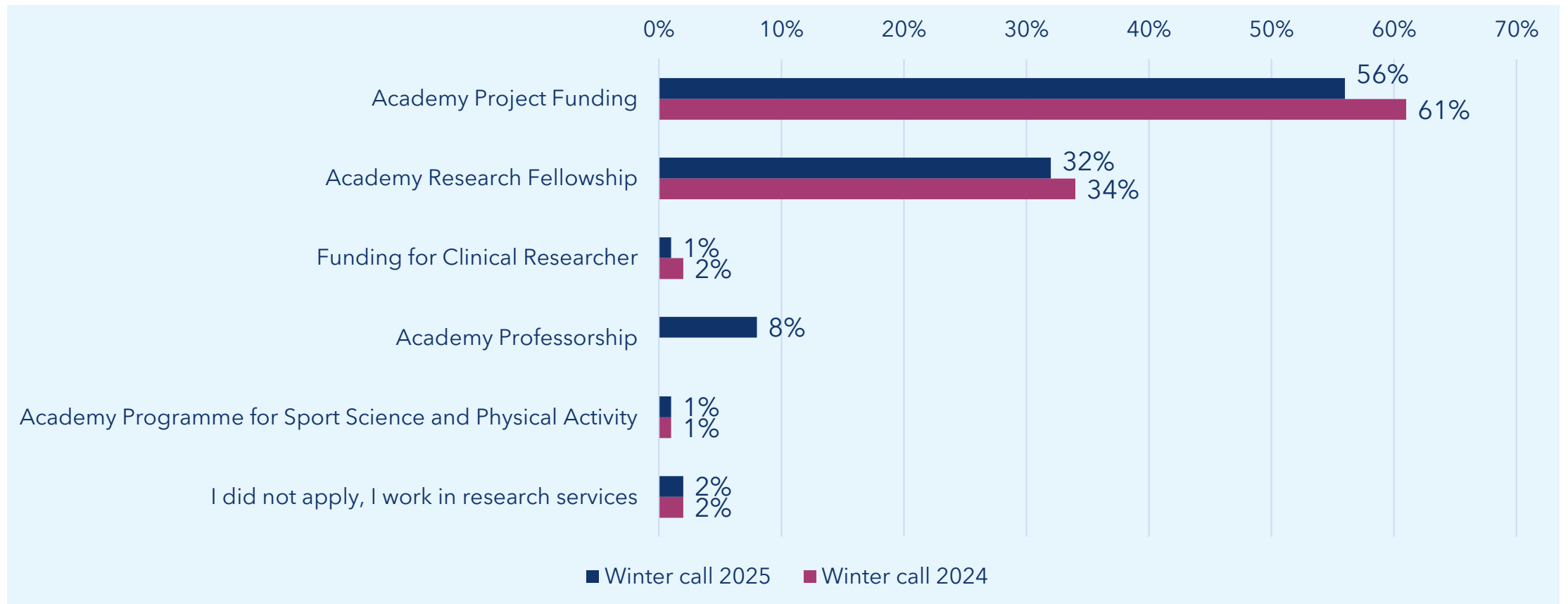
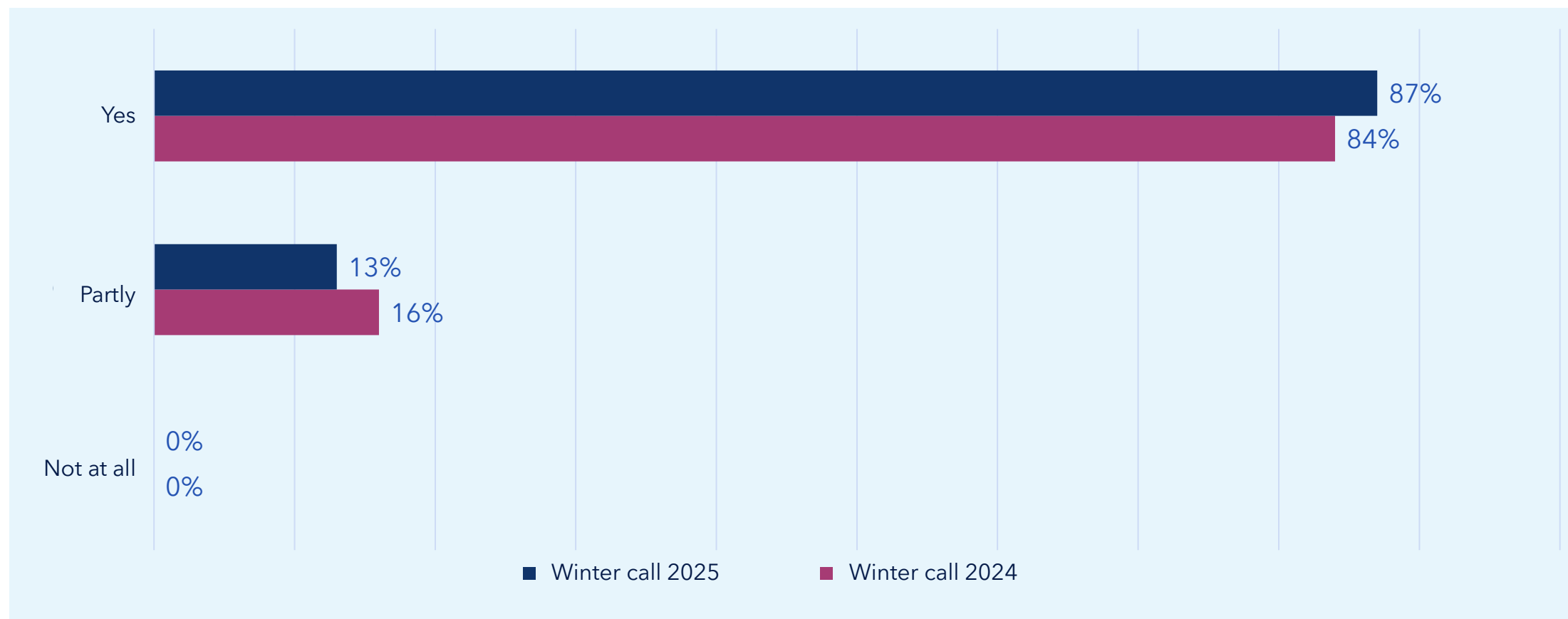


What funding did you apply for?



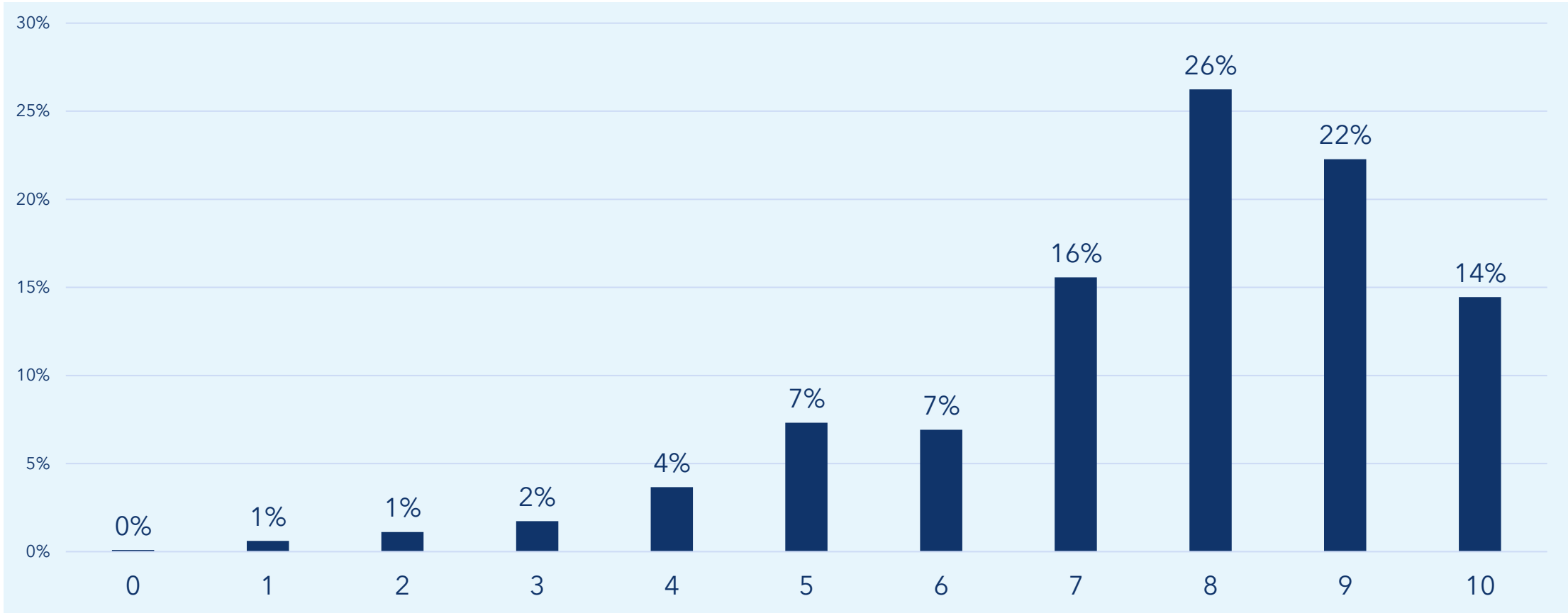
Did you find all the information needed to draft and submit the application in the call text?



What did you think of the guidelines on the following parts of the call text?

	The guidelines were clear and understandable	
	Winter call 2025	Winter call 2024
General information	97%	98%
Abstract	98%	99%
Merits and increased competencies (Academy Research Fellowship applicants only)	86%	89%
Merits and capabilities (Academy Professorship applicants only)	88%	
CV	95%	94%
Research plan	93%	95%
Funding for the project	82%	80%
Mobility	86%	87%
Collaborators	90%	91%
Progress report	92%	93%
Public project description	97%	98%

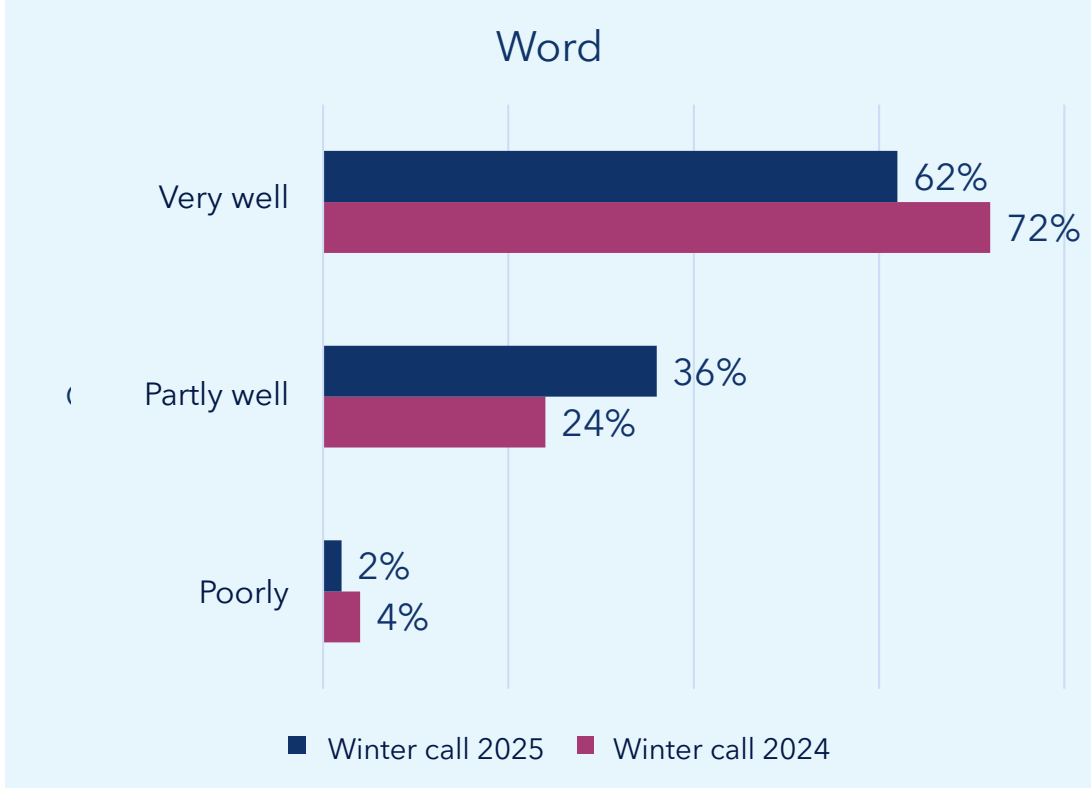
Research plan structure - How did it work for you?



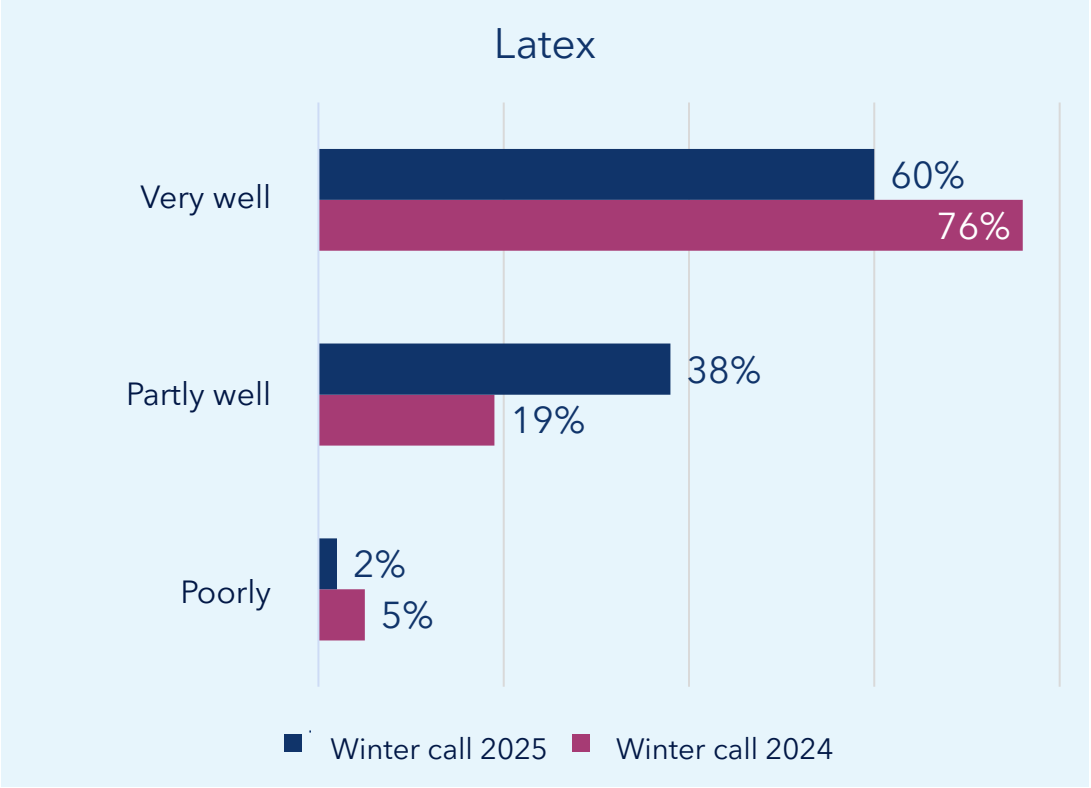
0 = Very poorly 10 = Very well

Winter call 2025, N = 938
No data from 2024

How well did the RCF's templates work?

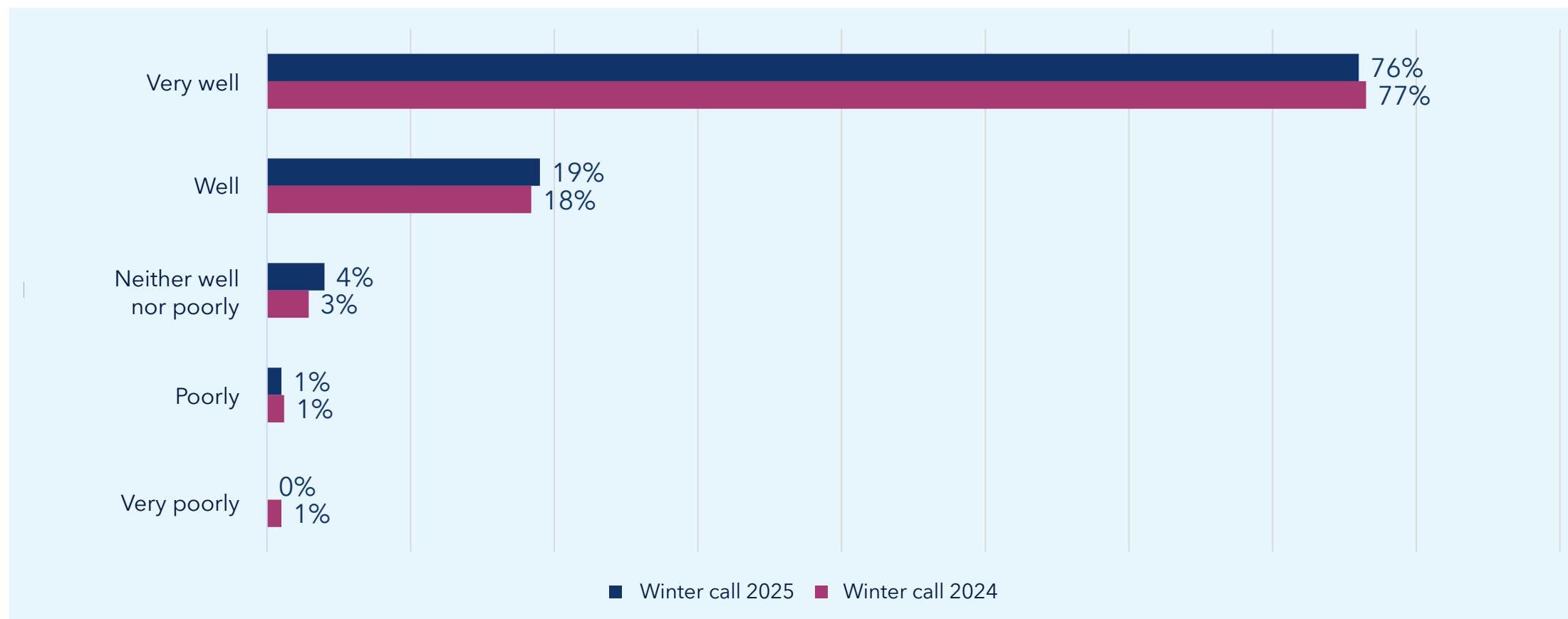


Winter call 2025, N = 871
Winter call 2024, N = 654



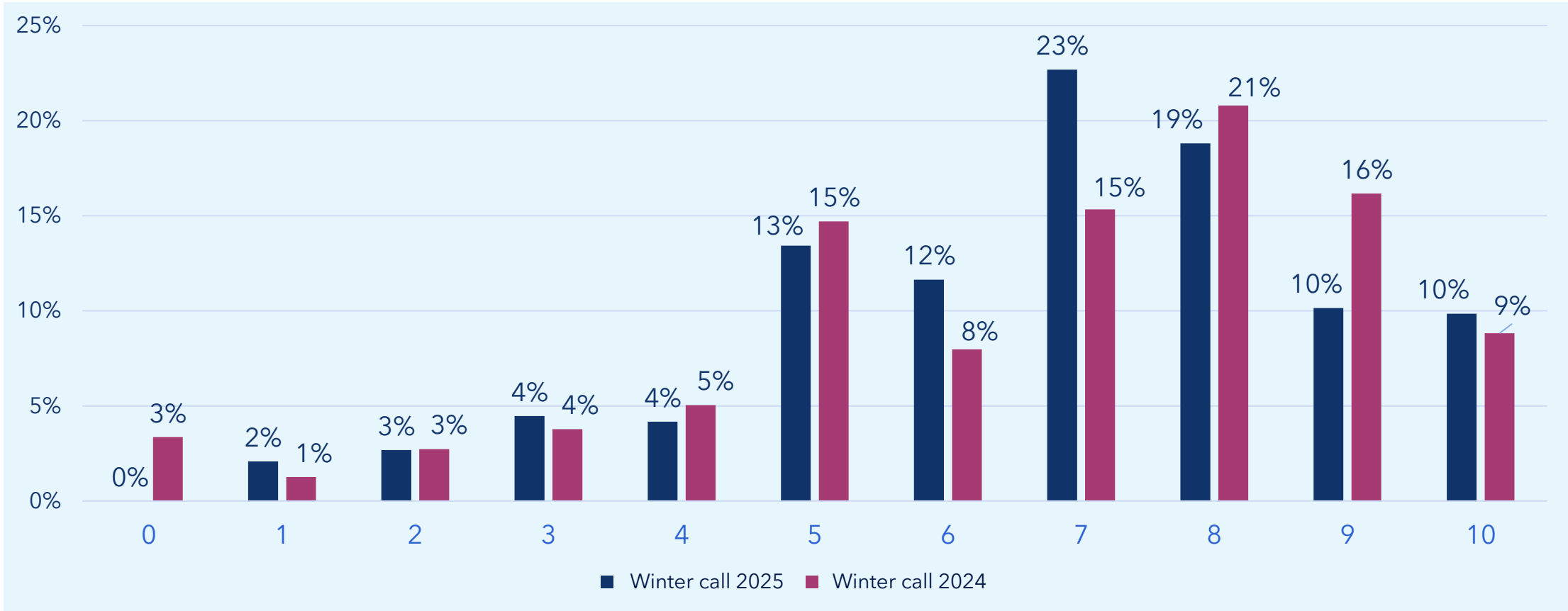
Winter call 2025, N = 139
Winter call 2024, N = 181

The research plan was a PDF appendix. How do you think this solution worked?



How well did 'Merits and increased competencies' allow you to describe this?

Academy Research Fellow applicants only

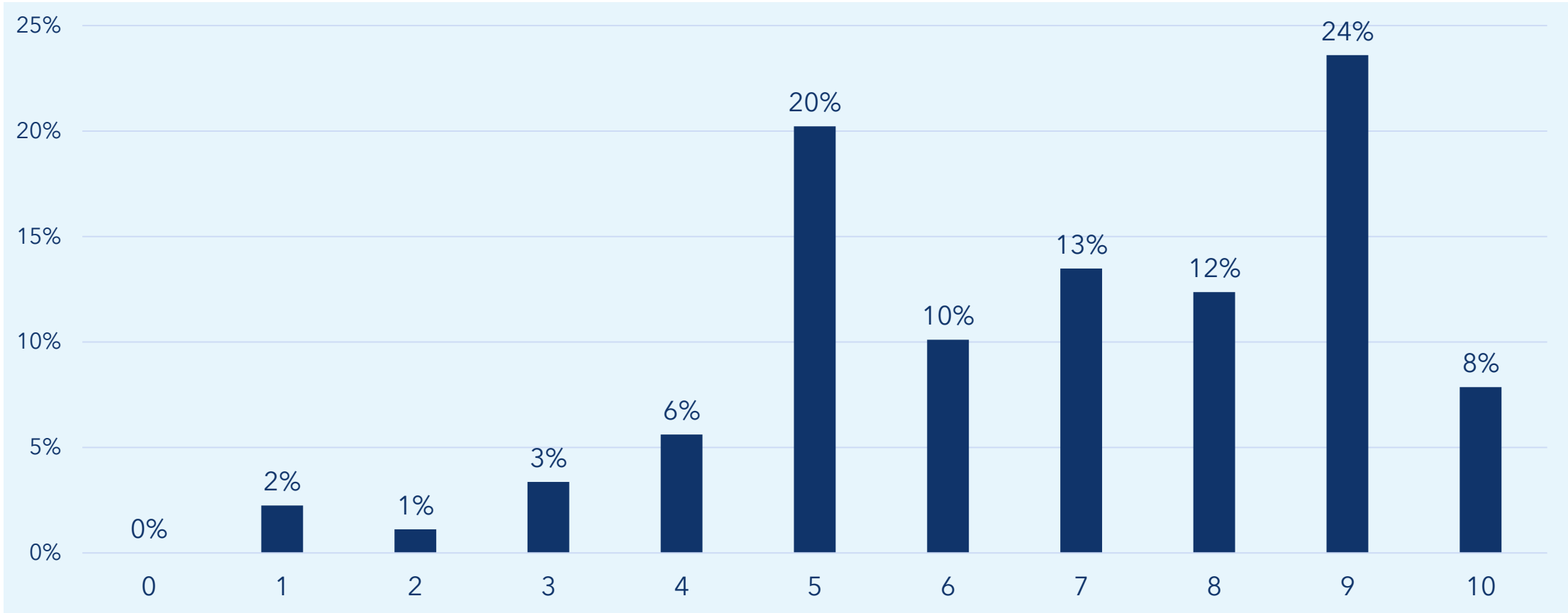


0 = Very poorly, 10 = Very well

Winter call 2025, N = 335
Winter call 2024, N = 476

How well did 'Merits and capabilities' allow you to describe this?

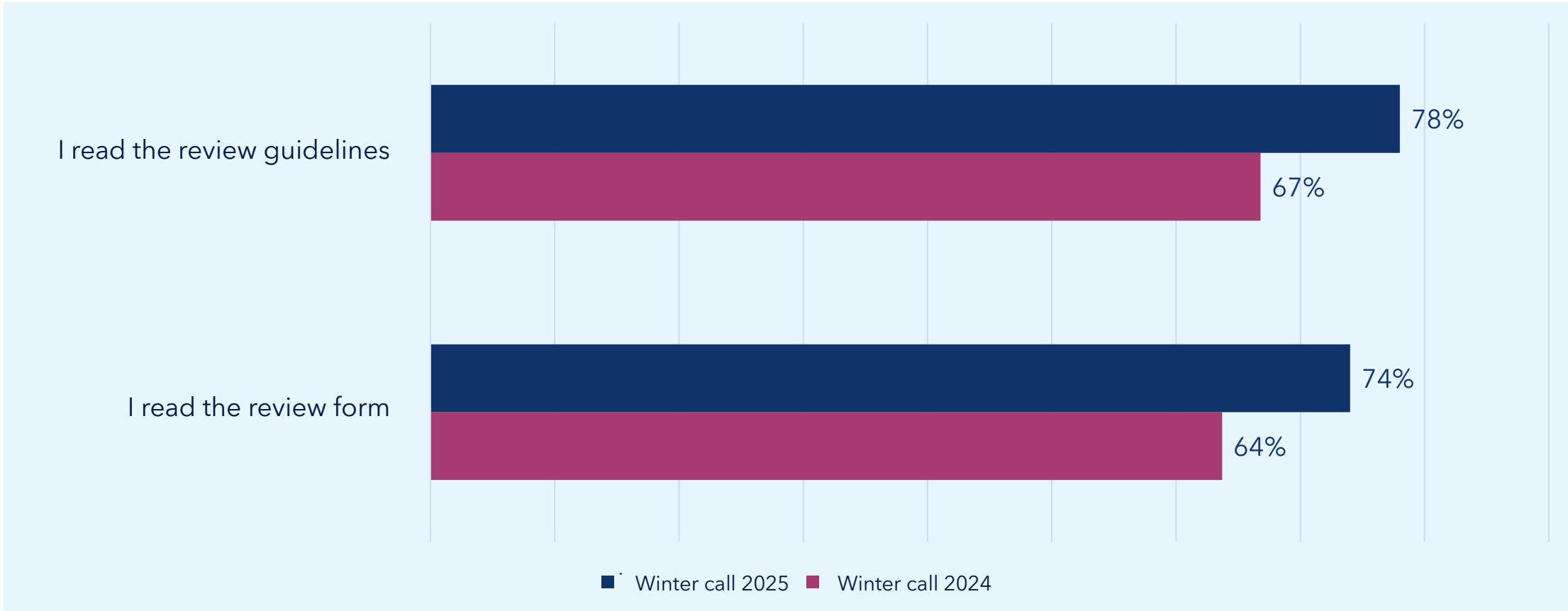
Academy Professor applicants only



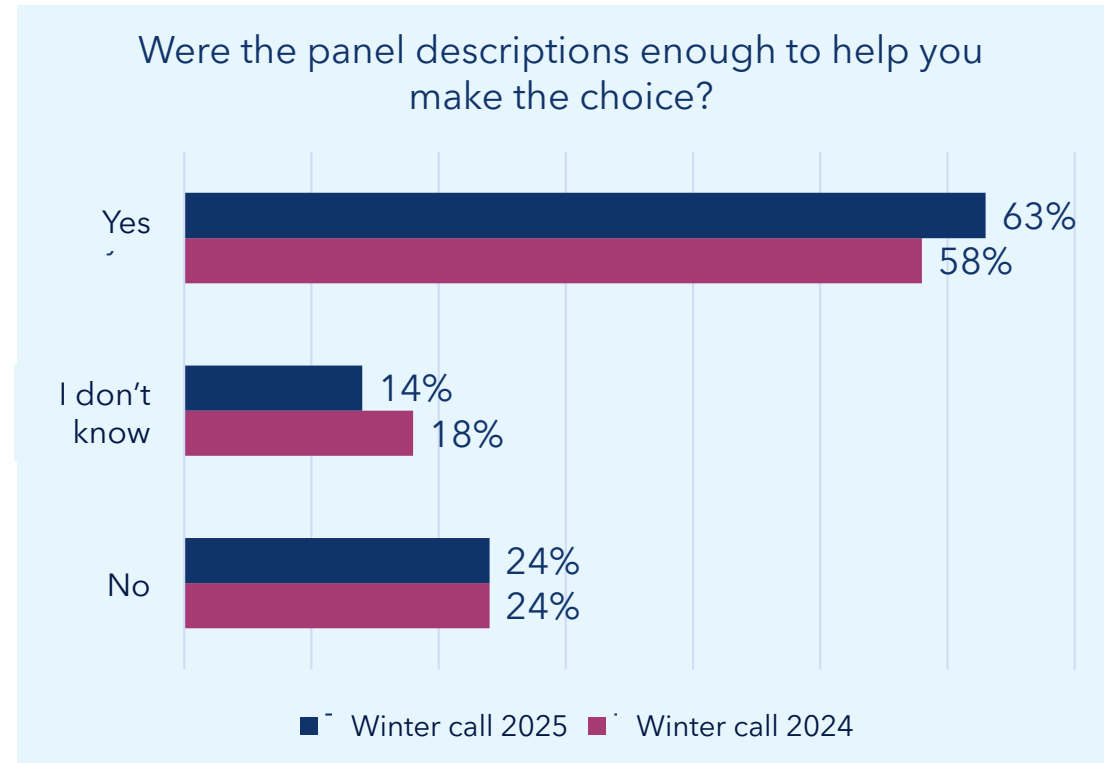
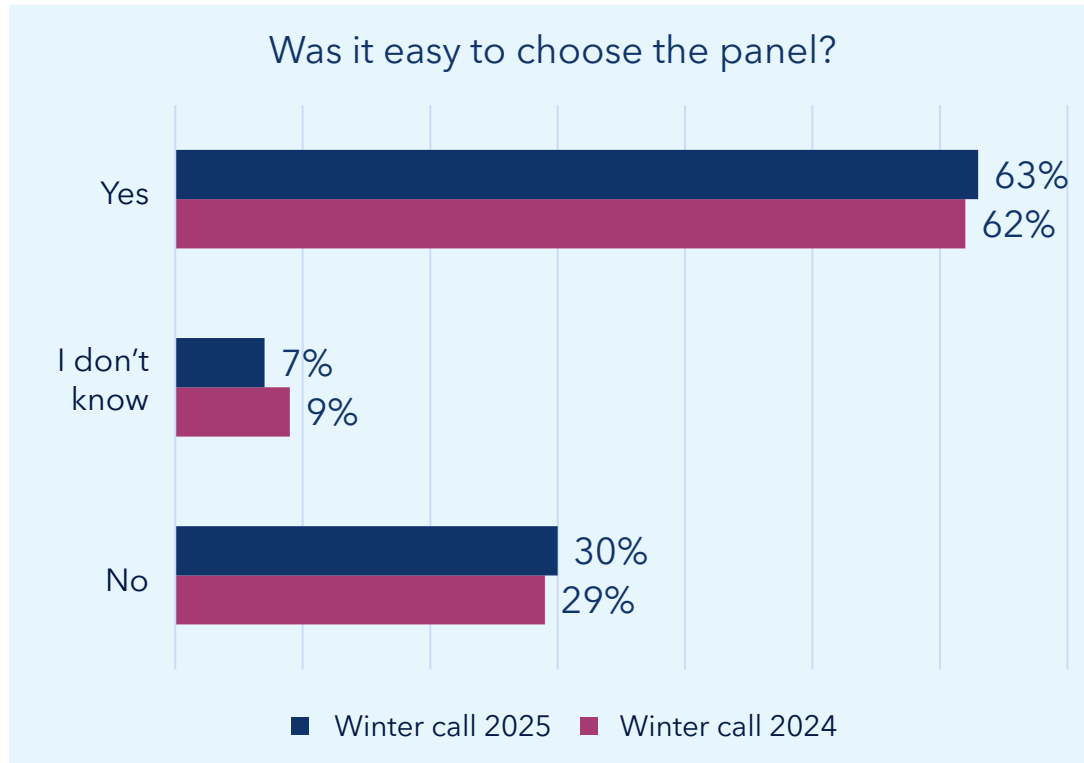
0 = Very poorly 10 = Very well

Winter call 2025, N = 89
No data from 2024

I read the review guidelines and forms



Panel selection



Winter call 2025, N = 1,011
Winter call 2024, N = 725

Application guidance

How useful were the webinars? Scale 0-10

	Mean	Standard deviation	Median
Winter call 2025 (N = 334)	6.9	2.3	7
Winter call 2024 (N = 284)	6.1	2.7	7

How do you think the RCF's application guidance works? Scale 0-10

	Mean	Standard deviation	Median
Winter call 2025 (N = 726)	7.8	1.6	8
Winter call 2024 (N = 684)	7.3	1.8	8

Overall rating to RCF for process of preparing and submitting application and for application guidance?

